

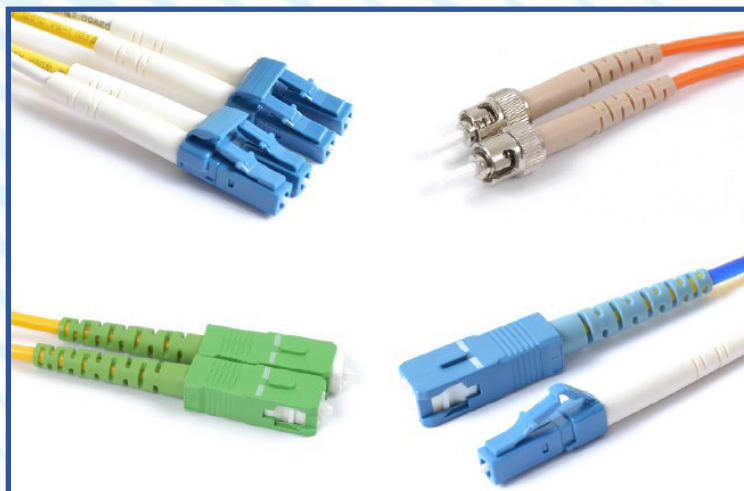
# FIS BLUE STOCK FIBER OPTIC PATCHCORDS



FIS Blue has the patchcords you need stocked and on the shelves. Choose from our large inventory of singlemode and multimode patchcords. The FIS Blue Stock Patchcords are available in the most popular connector combinations. Assembled using reliable and durable ceramic ferrules, you can choose between UPC, and APC polish finishes. Most cable assembly styles are available as either simplex or duplex. Multimode cords are available in either 62.5/125µm (OM1) or 50/125µm (OM2, OM3 and OM4).

## FEATURES

- Cables with LC Connectors Have a 1.6mm Jacket
- Riser Rated PVC Jacket with 900µm Buffer(s)
- Singlemode Cables Use SMF28Ultra Fiber and are GR-326 Compliant
- Call FIS Blue for Connector Configurations



## SPECIFICATIONS

### SINGLEMODE UPC CORDS

Jacket Color	Yellow
Connector Styles	ST/FC/SC/LC
Patchcord Lengths	1,2,3,5,10 meters
Length Tolerance	+/- 1 inch
Insertion Loss	0.1dB (typical) 0.3dB (max)
Back Reflection	-50dB
Operating Temperature	-20°C to +70°C

### SINGLEMODE APC CORDS

Jacket Color	Yellow
Connector Styles	ST/FC/SC/LC
Patchcord Lengths	1,2,3,5,10 meters
Length Tolerance	+/- 1 inch
Insertion Loss	0.1dB (typical) 0.3dB (max)
Back Reflection	-65dB
Operating Temperature	-20°C to +70°C

### MULTIMODE OM1/OM2 CORDS

Jacket Color	Orange
Connector Styles	ST/FC/SC/LC
Patchcord Lengths	1,2,3,5,10 meters
Length Tolerance	+/- 1 inch
Insertion Loss	0.1dB (typical) 0.3dB (max)
Back Reflection	-35dB
Operating Temperature	-20°C to +70°C

### MULTIMODE OM3/OM4 CORDS

Jacket Color	Aqua
Connector Styles	ST/FC/SC/LC
Patchcord Lengths	1,2,3,5,10 meters
Length Tolerance	+/- 1 inch
Insertion Loss	0.1dB (typical) 0.3dB (max)
Back Reflection	-35dB
Operating Temperature	-20°C to +70°C

161 Clear Road, Building One | Oriskany, NY 13424 | [www.fisblue.com](http://www.fisblue.com) | [info@fisblue.com](mailto:info@fisblue.com) | 1.877.347.0091



Rev. B 5-2021